



2026 FALL & WINTER

# J.PRESS WARDROBE



## Philosophy

The beauty of J.PRESS lies in its timeless qualities. Mixing traditional and Ivy League styles with contemporary inspirations. It's not just a mere rehash of classics but a style that resonates with the present. From Tokyo, where cultures and races intersect, we are proud to present the Next Trad and Next Ivy.

J.PRESSが持つ不変であるがゆえの美点。トラッド、アイビーを軸に、時流のインスピレーションを混ぜ合わせる。単なるクラシックの焼き直しではなく、現代に映えるスタイル。常に文化や人種が交錯し、日々多くのスタイルが生まれるここ東京からネクスト・トラッド、ネクスト・アイビーを発信します。



## J.PRESS WARDROBE

Centered on Ivy League traditions, J.PRESS continues to provide classic menswear. Among its offerings, the “J.PRESS Wardrobe” collection features garments suitable for traditional lifestyle scenes, reimagined with a modern touch..

アイビリーガーを中心とした人々のメンズクロージングを提供し続ける J.PRESS。中でもトラディショナルなライフスタイルでのシーンで着られるそれぞれのウエアーを J.PRESSワードローブと題して改めて必要なウエアーを今日的に提案するコレクション。



The QR code contains a hyperlink.  
Please scan it with your smartphone on printed materials, or simply click on it when viewing digitally.

このQRコードにはリンクが埋め込まれています。  
印刷物ではスマホなどで読み取り、デジタルデータ上ではクリックしてご覧いただけます。









ORDER DEADLINE FEBRUARY 15, 2026  
SHIPS IN AUGUST 2026 WITH EX-WORKS

STYLE NO. CO OA LW 0052  
MODEL NAME. REVERSIBLE TOPCOAT  
FABRIC NAME. C/W GABA×BARONTO BOIL  
COMPOSITION. W55 C45 / W100%  
SIZE. S, M, L, XL  
PRICE. ¥145,000 (¥159,500)  
COUNTRY OF ORIGIN. CHINA  
COLOR. NAVY-075, BROWN-030



NAVY-075



BROWN-030



			S	M	L	XL		CM
CB sleeve			85.75	88	90.25	92.5		
chest			128	132	136	140		
waist			128	132	136.4	140.4		
length			107	110	113	116		

ORDER DEADLINE FEBRUARY 15, 2026  
SHIPS IN AUGUST 2026 WITH EX-WORKS

STYLE NO. JK OA LW 0055  
MODEL NAME. REGULAR FIT 3B BLAZER  
FABRIC NAME. ORGANIC VELVET  
COMPOSITION. C100%  
SIZE. 32, 34, 36, 38, 40, 42, 44  
PRICE. ¥72,000 ( ¥ 79,200)  
COUNTRY OF ORIGIN. CHINA  
COLOR. NAVY-075



NAVY-075



	32	34	36	38	40	42	44	CM
shoulder width	43.5	44.9	46.3	47.7	49.1	50.5	51.9	
chest	104.8	108.8	112.8	116.8	120.8	124.8	128.8	
waist	94.5	98.5	102.5	106.5	110.5	114.5	118.5	
length	67	70	73	76	79	82	85	
sleeve	58	59.5	61	62.5	64	65.5	67	

ORDER DEADLINE FEBRUARY 15, 2026  
SHIPS IN AUGUST 2026 WITH EX-WORKS

STYLE NO. PP OA LW 0055  
MODEL NAME. SPINDLE PIPED STEM  
FABRIC NAME. .ORGANIC VELVET  
COMPOSITION. C100%  
PRICE. ¥38,000 ( ¥ 41,800)  
COUNTRY OF ORIGIN. CHINA  
COLOR. NAVY-075



NAVY-075

			28	30	32	34	36	CM
waist			75	80	85	90	95	
hip			99.3	103.6	107.9	112.2	116.5	
thigh width			33.7	34.9	36.1	37.3	38.5	
leg opening width			22.5	23	23.5	24	24.5	
inseam			74	76	78	80	82	



ORDER DEADLINE FEBRUARY 15, 2026  
SHIPS IN AUGUST 2026 WITH EX-WORKS

STYLE NO. JR OA LW 0051  
MODEL NAME. VERCITY JACKET BACK LOGO  
FABRIC NAME. ORGANIC 9W CORDUROY  
COMPOSITION. C100%  
SIZE. XS, S, M, L, XL  
PRICE. ¥63,000 ( ¥ 69,300)  
COUNTRY OF ORIGIN. CHINA  
COLOR. BEIGE-033, BROWN-035



BEIGE-033

BROWN-035



		XS	S	M	L	XL		CM
shoulder width		49	50.5	52	53.5	55		
back width		127	131	135	139	143		
waist		90	94	98	102	106		
length		66	68	70	72	74		
sleeve		59.5	61	62.5	64	65.5		

ORDER DEADLINE FEBRUARY 15, 2026  
SHIPS IN AUGUST 2026 WITH EX-WORKS

STYLE NO. JK OA LW 0051  
MODEL NAME. REGULAR FIT 3B JACKET  
FABRIC NAME. ORGANIC 9W CORDUROY  
COMPOSITION. C100%  
SIZE. 32, 34, 36, 38, 40, 42, 44  
PRICE. ¥68,000 ( ¥ 74,800)  
COUNTRY OF ORIGIN. CHINA  
COLOR. BEIGE-033, BROWN-035, GREEN-060



BEIGE-033

BROWN-035

GREEN-060



	32	34	36	38	40	42	44	CM
shoulder width	43.5	44.9	46.3	47.7	49.1	50.5	51.9	
chest	104.8	108.8	112.8	116.8	120.8	124.8	128.8	
waist	94.5	98.5	102.5	106.5	110.5	114.5	118.5	
length	67	70	73	76	79	82	85	
sleeve	58	59.5	61	62.5	64	65.5	67	



ORDER DEADLINE FEBRUARY 15, 2026  
SHIPS IN AUGUST 2026 WITH EX-WORKS

STYLE NO. PP OA LW 0051  
MODEL NAME. SPINDLE PIPED STEM  
FABRIC NAME. ORGANIC 9W CORDUROY  
COMPOSITION. C100%  
SIZE. 28, 30, 32, 34, 36  
PRICE. ¥34,000 ( ¥37,400)  
COUNTRY OF ORIGIN. CHINA  
COLOR. WHITE-001, BEIGE-033, BROWN-035, GREEN-060



WHITE-001

BEIGE-033

BROWN-035

GREEN-060



			28	30	32	34	36	CM
waist			75	80	85	90	95	
hip			99.3	103.6	107.9	112.2	116.5	
thigh width			33.7	34.9	36.1	37.3	38.5	
leg opening width			22.5	23	23.5	24	24.5	
inseam			74	76	78	80	82	



ORDER DEADLINE FEBRUARY 15, 2026  
SHIPS IN AUGUST 2026 WITH EX-WORKS

STYLE NO. KR OA LW 0054  
MODEL NAME. CREW NECK  
FABRIC NAME. RWS W/ALPACA/N NEP  
COMPOSITION. W65 N30 AP5%  
SIZE. XS, S, M, L, XL  
PRICE. ¥33,000 ( ¥ 36,300)  
COUNTRY OF ORIGIN. CHINA  
COLOR. HEATHER-003, GREEN-063, BROWN-035  
ARGYLE-960



HEATHER-003

GREEN-063

BROWN-035

ARGYLE-960



		XS	S	M	L	XL		CM
shoulder width		43	45	47	49	51		
chest		50	53	56	59	62		
waist								
length		63	65	67	69	71		
sleeve		59	60	61	62	63		

ORDER DEADLINE FEBRUARY 15, 2026  
SHIPS IN AUGUST 2026 WITH EX-WORKS

STYLE NO. HS OA LW 0053  
MODEL NAME. BAGGY FIT OPEN  
FABRIC NAME. INDIA SHUTTLE TWILL CHECK  
COMPOSITION. C100%  
SIZE. XS, S, M, L, XL  
PRICE. ¥29,000 ( ¥ 31,900)  
COUNTRY OF ORIGIN. INDIA  
COLOR. GREEN-360, RED-315



GREEN-360



RED-315



		XS	S	M	L	XL		CM
shoulder width		47	49	51	53	55		
chest		120	126	132	138	144		
waist		114	120	126	132	138		
length		70	72	74	76	78		
sleeve		58.5	59.5	60.5	61.5	62.5		



ORDER DEADLINE FEBRUARY 15, 2026  
SHIPS IN AUGUST 2026 WITH EX-WORKS

STYLE NO. HS OA LW 0054  
MODEL NAME. BAGGY FIT B.D.  
FABRIC NAME. MANTECO AIR VEIL  
COMPOSITION. C76 N24%  
SIZE. XS, S, M, L, XL  
PRICE. ¥27,000 ( ¥ 29,700)  
COUNTRY OF ORIGIN. JAPAN  
COLOR. WHITE-001, BROWN-035



WHITE-001



BROWN-035



		XS	S	M	L	XL		CM
shoulder width		49	51	53	55	57		
chest		114	120	126	132	138		
waist		107	113	119	125	131		
length		72	74	76	78	80		
sleeve		57.5	58.5	59.5	60.5	61.5		



ORDER DEADLINE FEBRUARY 15, 2026  
SHIPS IN AUGUST 2026 WITH EX-WORKS

STYLE NO. PP OA LW 0056  
MODEL NAME. SPINDLE PIPED STEM  
FABRIC NAME. C/W GABA  
COMPOSITION. W55 C45  
SIZE. 28, 30, 32, 34, 36  
PRICE. ¥36,000 ( ¥ 39,600)  
COUNTRY OF ORIGIN. CHINA  
COLOR. BEIGE-033, BROWN-030



BEIGE-033



BROWN-030



			28	30	32	34	36	CM
waist			75	80	85	90	95	
hip			99.3	103.6	107.9	112.2	116.5	
thigh width			33.7	34.9	36.1	37.3	38.5	
leg opening width			22.5	23	23.5	24	24.5	
inseam			74	76	78	80	82	



YAMAGATA JAPAN

Shaggy Dog MADE BY YONETOMI

The Shetland sweater, a symbol of traditional style, has long been offered by J.PRESS under the name "Shaggy Dog." Its fluffy brushed texture reminded the brand of a shaggy dog, inspiring the unique name. Over time, the "Shaggy Dog Sweater" became widely recognized as a beloved nickname.

To evolve this iconic piece, J.PRESS has begun producing it in Japan. The partner for this initiative is Yonetomi Seni, a leading Japanese knitwear manufacturer founded in 1952, also known for its own brands YONETOMI NEW BASIC and COOHEM. Thanks to YONETOMI's strong fashion sensibility and dedication to craftsmanship backed by technical excellence, a completely new and one-of-a-kind Shaggy Dog sweater was born. Made with British wool, the sweater is brushed using teasels in a traditional method and hand-knitted with care.

Last season, we also introduced a new border pattern for our skipper polo shirt. In addition, a pullover V-neck vest has been added to the lineup.

トラディショナルを象徴するセーター〈シェットランドセーター〉。J.PRESSでは長きに渡り〈シャギードック〉というネーミングで展開をしています。ふわふわの起毛がムク犬を彷彿とさせることから、J.PRESSが「シャギードックセーター」と命名。以来、一般的な愛称として浸透していきました。

このシャギードックを進化させたいと考えMADE IN JAPANでの生産をスタート。タグを組んだのは、1952年創業の日本を代表するニットメーカー米富繊維。自社ブランドYONETOMI NEW BASIC、COOHEMも展開しています。

YONETOMIのファッション感度と、技術力の高さに裏付けされたモノづくりへのこだわりにより、唯一無二の新たなシャギードックセーターが誕生しました。英国羊毛を使用し、伝統的な製法であるチーゼルの実での起毛をハンドニットイングにより行っています。また先シーズンにリリースしたスキッパーポロには、新しいボーダーパターンを加えています。あわせて、プルオーバータイプのVネックベストもラインナップに加わりました。

WHITE-001

GRAY-004

NAVY-075



GREEN-060

RED-010

ORDER DEADLINE FEBRUARY 15, 2026  
SHIPS IN AUGUST 2026 WITH EX-WORKS

STYLE NO. KR OA LW 0051

MODEL NAME. SADDLE CREW NECK

FABRIC NAME. SHAGGY DOG

COMPOSITION. W100%

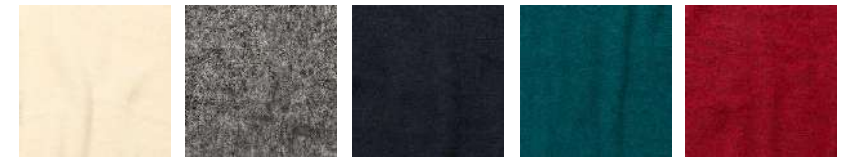
SIZE. XS, S, M, L, XL

PRICE. ¥30,000 (¥33,000)

COUNTRY OF ORIGIN. JAPAN

COLOR. WHITE-001, GRAY-004, NAVY-075

GREEN-060, RED-010



		XS	S	M	L	XL		CM
yoke		82	83	84	85	86		
sleeve								
length		61.5	63.5	65.5	67.5	69.5		
chest		47	50	53	56	59		
waist								
sleeve								



GRAY-004

NAVY-075



NAVY ST-175

GREEN ST-160

RED ST-110

ORDER DEADLINE FEBRUARY 15, 2026  
SHIPS IN AUGUST 2026 WITH EX-WORKS

STYLE NO. KR OA LW 0053  
MODEL NAME. SKIPPER POLO  
FABRIC NAME. SHAGGY DOG  
COMPOSITION. W100%  
SIZE. XS, S, M, L, XL  
PRICE. ¥33,000 ( ¥ 36,300)  
COUNTRY OF ORIGIN. JAPAN  
COLOR. GRAY-004, NAVY-075  
NAVY ST-175, GREEN ST-160, RED ST-110



		XS	S	M	L	XL		CM
yoke sleeve length		43	45	47	49	51		
chest		50	53	56	59	62		
waist								
length		61.5	63.5	65.5	67.5	69.5		
sleeve								



ORDER DEADLINE FEBRUARY 15, 2026  
SHIPS IN AUGUST 2026 WITH EX-WORKS

STYLE NO. KR OA LW 0052  
MODEL NAME. V/VEST  
FABRIC NAME. SHAGGY DOG  
COMPOSITION. W100%  
SIZE. XS, S, M, L, XL  
PRICE. ¥27,000 ( ¥ 29,700)  
COUNTRY OF ORIGIN. JAPAN  
COLOR. WHITE-001, GRAY-004, GREEN-060, RED-010

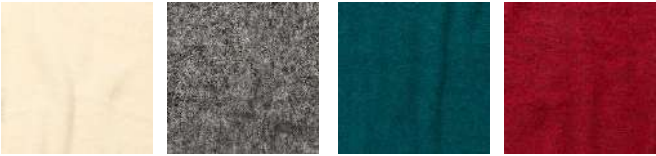


WHITE-001

GRAY-004

GREEN-060

RED-010



		XS	S	M	L	XL		CM
shoulder width		82	83	84	85	86		
chest		47	50	53	56	59		
waist								
length		63.5	65.5	67.5	69.5	71.5		
sleeve								



WAKAYAMA JAPAN

KANEMASA PHIL × J.PRESS ORIGINALS

KANEMASA PHIL.

The collaboration series between KANEMASA PHIL. and J.PRESS ORIGINALS blends the technical expertise of Japanese knitting by Kanemasa and the modern sensibility of Kanemasa Phil.

Together, they develop materials and products that reflect a contemporary mood. Continuing from previous seasons, we present a sporty jersey blazer crafted from lightweight jersey poplin, featuring snap buttons designed to resemble classic gold buttons—a modern take on the traditional J.PRESS blazer..

〈KANEMASA PHIL.〉と〈J.PRESS ORIGINALS〉のコラボレーションシリーズは日本の技術であるカネマサニットイングのノウハウとカネマサフィルの感性で今日的なムードで素材、プロダクトの開発をしています。

引き続きJ.PRESSのブレザーをライトウェイトなジャージーポプリン素材で金ボタンに見立てたスナップボタンのブレザーを作りスポーティーなジャージブレザーを提案致します。





NAVY-075

BEIGE-034

OLIVE-055

ORDER DEADLINE FEBRUARY 15, 2026  
SHIPS IN AUGUST 2026 WITH EX-WORKS

STYLE NO. BZ OA LW 0060  
MODEL NAME. TAPING DOT BLAZER  
FABRIC NAME. FLANNEL JERSAY  
COMPOSITION. W100%  
SIZE. XS, S , M , L, XL  
PRICE. ¥66,000 ( ¥ 72,600)  
COUNTRY OF ORIGIN. JAPAN  
COLOR. NAVY-075, BEIGE-034, OLIVE-055



			S	M	L	XL		CM
shoulder width			46.6	48	49.4	50.8		
chest			112	116	120	124		
waist			105	109	113	117		
length			73	76	79	82		
sleeve			60.5	62	63.5	65		

## SOUVENIR PROGRAM

A souvenir program offering standout pieces designed to be picked up like a keepsake or memento.

Each piece from J.PRESS ORIGINALS is crafted with the hope that people will not only see and try them on. But also wear them for a long time with lasting comfort and affection.

These garments allow you to experience a new world of IVY and American Traditional style in an enjoyable way. Whether as a gift for friends and family or as part of a wardrobe for creating special moments, we hope they become your favorite pieces.

記念品やお土産感覚で手にとってもらいたい キャッチーなアイテムを提案するスーベニアプログラム。

J.PRESS ORIGINALSを、見てもらいたい、試してもらいたい、そして永く心地よく愛用してもらいたいという想いが込められたウェアは、楽しみながら新たなIVYやアメトラの世界観を体現することができ友人や家族への贈り物として、素敵な時間を過ごすためのワードローブとして、お気に入りの洋服となりますように。



ORDER DEADLINE FEBRUARY 15, 2026  
SHIPS IN AUGUST 2026 WITH EX-WORKS

STYLE NO. BZ OA LW 0001  
MODEL NAME. 3B BAGGY FIT BLAZER  
FABRIC NAME. TW STRETCH TORO  
COMPOSITION. W50% PE50%  
SIZE. 32, 34, 36, 38, 40, 42, 44  
PRICE. ¥36,000 ( ¥ 39,600)  
COUNTRY OF ORIGIN. CHINA  
COLOR. NAVY-075



NAVY-075



	32	34	36	38	40	42	44	CM
shoulder width	43.8	45.2	46.6	48	49.4	50.8	52.2	
back width	104.8	108.8	112.8	116.8	120.8	124.8	128.8	
waist	99	103	107	111	115	119	123	
length	67	70	73	76	79	82	85	
sleeve	58	59.5	61	62.5	64	65.5	67	



ORDER DEADLINE FEBRUARY 15, 2026  
SHIPS IN AUGUST 2026 WITH EX-WORKS

STYLE NO. BZ OA LW 0011  
MODEL NAME. 4B BAGGY FIT W BLAZER  
FABRIC NAME. TW STRETCH TORO  
COMPOSITION. W50% PE50%  
SIZE. 32, 34, 36, 38, 40, 42, 44  
PRICE. ¥38,000 ( ¥ 41,800)  
COUNTRY OF ORIGIN. CHINA  
COLOR. NAVY-075



NAVY-075



	32	34	36	38	40	42	44	CM
shoulder width	43.8	45.2	46.6	48	49.4	50.8	52.2	
back width	105.5	109.5	113.5	117.5	121.5	125.5	129.5	
waist	99	103	107	111	115	119	123	
length	67	70	73	76	79	82	85	
sleeve	58	59.5	61	62.5	64	65.5	67	

ORDER DEADLINE FEBRUARY 15, 2026  
SHIPS IN AUGUST 2026 WITH EX-WORKS

STYLE NO. BZ OA LW 0002  
MODEL NAME. 3B BAGGY FIT BLAZER  
FABRIC NAME. TW STRETCH SAXONY  
COMPOSITION. W50 P30 RP20%  
SIZE. 32, 34, 36, 38, 40, 42, 44  
PRICE. ¥38,000 ( ¥ 41,800)  
COUNTRY OF ORIGIN. CHINA  
COLOR. NAVY-075



NAVY-075

	32	34	36	38	40	42	44	CM
shoulder width	43.8	45.2	46.6	48	49.4	50.8	52.2	
back width	104.8	108.8	112.8	116.8	120.8	124.8	128.8	
waist	99	103	107	111	115	119	123	
length	67	70	73	76	79	82	85	
sleeve	58	59.5	61	62.5	64	65.5	67	

ORDER DEADLINE FEBRUARY 15, 2026  
SHIPS IN AUGUST 2026 WITH EX-WORKS

STYLE NO. BZ OA LW 0022  
MODEL NAME. 4B BAGGY FIT W BLAZER  
FABRIC NAME. TW STRETCH SAXONY  
COMPOSITION. W50 P30 RP20%  
SIZE. 32, 34, 36, 38, 40, 42, 44  
PRICE. ¥40,000 ( ¥ 44,000)  
COUNTRY OF ORIGIN. CHINA  
COLOR. NAVY-075



	32	34	36	38	40	42	44	CM
shoulder width	43.8	45.2	46.6	48	49.4	50.8	52.2	
back width	105.5	109.5	113.5	117.5	121.5	125.5	129.5	
waist	99	103	107	111	115	119	123	
length	67	70	73	76	79	82	85	
sleeve	58	59.5	61	62.5	64	65.5	67	



NAVY-075



ORDER DEADLINE FEBRUARY 15, 2026  
SHIPS IN AUGUST 2026 WITH EX-WORKS

STYLE NO. HS OA LW 0902  
MODEL NAME. BAGGY FIT B.D.  
FABRIC NAME. PIN OXFORD  
COMPOSITION. C100%  
SIZE. XS, S, M, L, XL  
PRICE. ¥14,000 ( ¥ 15,400)  
COUNTRY OF ORIGIN. LAOS  
COLOR. WHITE-001, SAX BLUE-073, STRIPE-173  
PINK-012, YELLOW-040



WHITE-001



SAX BLUE-073



STRIPE-173



PINK-012



YELLOW-040



		XS	S	M	L	XL		CM
shoulder width		49	51	53	55	57		
chest		114	120	126	132	138		
waist		107	113	119	125	131		
length		74	76	78	80	82		
sleeve		57.5	58.5	59.5	60.5	61.5		

ORDER DEADLINE FEBRUARY 15, 2026  
SHIPS IN AUGUST 2026 WITH EX-WORKS

STYLE NO. HS OA LW 0903  
MODEL NAME. BAGGY FIT B.D.  
FABRIC NAME. PIN OXFORD CRAZY  
COMPOSITION. C100%  
SIZE. XS, S, M, L, XL  
PRICE. ¥18,000 ( ¥ 19,800)  
COUNTRY OF ORIGIN. LAOS  
COLOR. CRAZY PATTERN-973



CRAZY PATTERN-973



		XS	S	M	L	XL		CM
shoulder width		49	51	53	55	57		
chest		114	120	126	132	138		
waist		107	113	119	125	131		
length		74	76	78	80	82		
sleeve		57.5	58.5	59.5	60.5	61.5		

ORDER DEADLINE FEBRUARY 15, 2026  
SHIPS IN AUGUST 2026 WITH EX-WORKS

STYLE NO. HS OA LW 0904  
MODEL NAME. BAGGY FIT B.D.  
FABRIC NAME. LIGHT OZ COTTON DENIM  
COMPOSITION. C100%  
SIZE. XS, S, M, L, XL  
PRICE. ¥16,000 ( ¥ 17,600)  
COUNTRY OF ORIGIN. LAOS  
COLOR. NAVY-075, BLUE-073



NAVY-075



BLUE-073



		XS	S	M	L	XL		CM
shoulder width		49	51	53	55	57		
chest		114	120	126	132	138		
waist		107	113	119	125	131		
length		74	76	78	80	82		
sleeve		57.5	58.5	59.5	60.5	61.5		



SOUVENIR  
PROGRAM.



WHITE-001



GRAY-003



NAVY-075



RED-010

ORDER DEADLINE FEBRUARY 15, 2026  
SHIPS IN AUGUST 2026 WITH EX-WORKS

STYLE NO. KK OA LW 0901  
MODEL NAME. COLLEGE LOGO-SWEAT  
FABRIC NAME. FRENCH TERRY  
COMPOSITION. C100%  
SIZE. XS, S, M, L, XL  
PRICE. ¥9,900 (¥10,890)  
COUNTRY OF ORIGIN. CHINA  
COLOR. WHITE-001, GRAY-003, NAVY-075, RED-010



		XS	S	M	L	XL		CM
shoulder width		46	48	50	52	54		
chest		51	54	57	60	63		
waist								
length		64	66	68	70	72		
sleeve		59	60	61	62	63		

SOUVENIR  
PROGRAM.



WHITE-001



GRAY-003



NAVY-075



RED-010

ORDER DEADLINE FEBRUARY 15, 2026  
SHIPS IN AUGUST 2026 WITH EX-WORKS

STYLE NO. KH OA LW 0901  
MODEL NAME. COLLEGE LOGO-TEE  
FABRIC NAME. 30/2 JERSEY  
COMPOSITION. C100%  
SIZE. XS, S, M, L, XL  
PRICE. ¥6,300 ( ¥ 6,930)  
COUNTRY OF ORIGIN. CHINA  
COLOR. WHITE-001, GRAY-003, NAVY-075, RED-010



		XS	S	M	L	XL		CM
shoulder width		49	51	53	55	57		
chest		51	54	57	60	63		
waist								
length		68	70	72	74	76		
sleeve		24.5	25.5	26.5	27.5	28.5		



ORDER DEADLINE FEBRUARY 15, 2026  
SHIPS IN AUGUST 2026 WITH EX-WORKS

STYLE NO. KK OA LW 0311  
MODEL NAME. COLLEGE LOGO-LONG TEE  
FABRIC NAME. 30/2 JERSEY  
COMPOSITION. C100%  
SIZE. XS, S, M, L, XL  
PRICE. ¥7,200 ( ¥ 7,920)  
COUNTRY OF ORIGIN. CHINA  
COLOR. WHITE-001, GRAY-003, NAVY-075



WHITE-001

GRAY-003

NAVY-075



		XS	S	M	L	XL		CM
shoulder width		49	51	53	55	57		
chest		51	54	57	60	63		
waist								
length		68	70	72	74	76		
sleeve		61	62	63	64	65		

SOUVENIR PROGRAM.

ORDER DEADLINE FEBRUARY 15, 2026  
SHIPS IN AUGUST 2026 WITH EX-WORKS

STYLE NO. KK OA LW 0902  
MODEL NAME. VINTAGE LOGO HALF ZIP  
FABRIC NAME. FRENCH TERRY  
COMPOSITION. C100%  
SIZE. XS, S, M, L, XL  
PRICE. ¥11,800 (¥12,980)  
COUNTRY OF ORIGIN. CHINA  
COLOR. WHITE-001, GRAY-003, NAVY-075, BLUE-070



WHITE-001



GRAY-003



NAVY-075



BLUE-070



		XS	S	M	L	XL		CM
shoulder width		46	48	50	52	54		
chest		51	54	57	60	63		
waist								
length		64	66	68	70	72		
sleeve		59	60	61	62	63		

SOUVENIR  
PROGRAM.



WHITE-001



GRAY-003



NAVY-075



BLUE-070

ORDER DEADLINE FEBRUARY 15, 2026  
SHIPS IN AUGUST 2026 WITH EX-WORKS

STYLE NO. KH OA LW 0902  
MODEL NAME. VINTAGE LOGO-TEE  
FABRIC NAME. 30/2 JERSEY  
COMPOSITION. C100%  
SIZE. XS, S, M, L, XL  
PRICE. ¥6,800 ( ¥ 7,480)  
COUNTRY OF ORIGIN. CHINA  
COLOR. WHITE-001, GRAY-003, NAVY-075, BLUE-070



		XS	S	M	L	XL		CM
shoulder width		49	51	53	55	57		
chest		51	54	57	60	63		
waist								
length		68	70	72	74	76		
sleeve		24.5	25.5	26.5	27.5	28.5		



SOUVENIR  
PROGRAM.

ORDER DEADLINE FEBRUARY 15, 2026  
SHIPS IN AUGUST 2026 WITH EX-WORKS

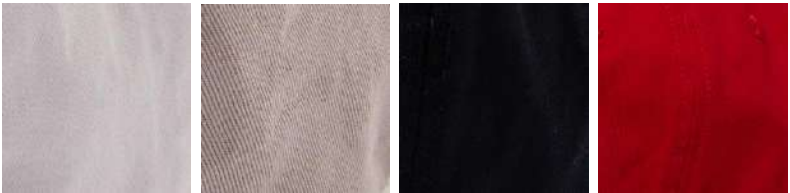
STYLE NO. HT OA LW 0901  
MODEL NAME. COLLEGE LOGO CAP  
FABRIC NAME. COTTON TWILL  
COMPOSITION. C100%  
SIZE. F  
PRICE. ¥6,000 ( ¥6,600)  
COUNTRY OF ORIGIN. CHINA  
COLOR. WHITE-001, GRAY-003, NAVY-075, RED-010



WHITE-001



GRAY-003



NAVY-075



RED-010

	F							CM
Circumference	55-60							
Height	11							
Brim	8							

ORDER DEADLINE FEBRUARY 15, 2026  
SHIPS IN AUGUST 2026 WITH EX-WORKS

STYLE NO. TR OA LW 0901  
MODEL NAME. DOTS TIE  
FABRIC NAME. SILK SATIN  
COMPOSITION. S100%  
SIZE. F  
PRICE. ¥8,100 ( ¥8,910)  
COUNTRY OF ORIGIN. CHINA  
COLOR. NAVY-075, BLACK-005



NAVY-075



BLACK-005



	F							CM
width	8.5							
length	144							

ORDER DEADLINE FEBRUARY 15, 2026  
SHIPS IN AUGUST 2026 WITH EX-WORKS

STYLE NO. AA OA LW 0901  
MODEL NAME. DOTS STOOL  
FABRIC NAME. SILK SATIN  
COMPOSITION. S100%  
SIZE. F  
PRICE. ¥7,200 ( ¥ 7,920)  
COUNTRY OF ORIGIN. CHINA  
COLOR. NAVY-075, GREEN-060, BLACK-005



BLUE-070



GREEN-060



NAVY-075



	F							CM
length	128							
width	8.5							





## HERITAGE STOCK PROGRAM

The HERITAGE STOCK PROGRAM redefines clothing as something that supports one's character and lifestyle—regardless of age, gender, or race.

Launched in the Fall/Winter 2020 season, this project reimagines the iconic products that have built the foundation of J.PRESS, offering them from a new perspective.

Every item in the collection is proudly made in Japan, with meticulous attention to detail reflecting traditional Japanese craftsmanship.

Blending American traditional style with the refined aesthetic of the Japanese spirit, the program continues to deliver uncompromising, top-tier garments to discerning customers around the world.

年齢、性別、人種を問わず、人格と生活に寄り添う服であることを改めて定義する

〈HERITAGE STOCK PROGRAM〉。J.PRESSの礎を築いた定番プロダクトを再構築し、新たに提案するプロジェクトとして2020AWシーズンよりスタートしました。全てのプロダクトにおいて「メイド・イン・ジャパン」を軸とし、日本の伝統技術を細部にまで反映させています。アメリカントラディショナルと日本人の美意識が交わり生み出された、くるいのない最高級製品を世界中のユーザーに向け発信し続けます。

HERITAGE  
STOCK  
PROGRAM.

ORDER DEADLINE FEBRUARY 15, 2026  
SHIPS IN AUGUST 2026 WITH EX-WORKS

STYLE NO. BZ OA LW 0801  
MODEL NAME. 3B AUTHENTIC BLAZER  
FABRIC NAME. PEPPIN MERINO TROPICAL  
COMPOSITION. W100%  
SIZE. 32, 34, 36, 38, 40, 42, 44  
PRICE. ¥63,000 ( ¥ 69,300)  
COUNTRY OF ORIGIN. JAPAN  
COLOR. NAVY-075



NAVY-075



	32	34	36	38	40	42	44	CM
shoulder width	42.1	43.5	44.9	46.3	47.7	49.1	50.5	
chest	100.8	104.8	108.8	112.8	116.8	120.8	124.8	
waist	90.5	94.5	98.5	102.5	106.5	110.5	114.5	
length	65	68	71	74	77	80	83	
sleeve	58	59.5	61	62.5	64	65.5	67	

HERITAGE  
STOCK  
PROGRAM.

ORDER DEADLINE FEBRUARY 15, 2026  
SHIPS IN AUGUST 2026 WITH EX-WORKS

STYLE NO. BZ OA LW 0802  
MODEL NAME. 4B AUTHENTIC BLAZER  
FABRIC NAME. PEPPIN MERINO TROPICAL  
COMPOSITION. W100%  
SIZE. 32, 34, 36, 38, 40, 42, 44  
PRICE. ¥66,000 ( ¥72,600)  
COUNTRY OF ORIGIN. JAPAN  
COLOR. NAVY-075



NAVY-075



	32	34	36	38	40	42	44	CM
shoulder width	42.5	43.9	45.3	46.7	48.1	49.5	50.9	
chest	99.3	103.3	107.3	111.3	115.3	119.3	123.3	
waist	88	92	96	100	104	108	112	
length	67	70	73	76	79	82	85	
sleeve	58	59.5	61	62.5	64	65.5	67	



HERITAGE  
STOCK  
PROGRAM.

ORDER DEADLINE FEBRUARY 15, 2026  
SHIPS IN AUGUST 2026 WITH EX-WORKS

STYLE NO. PP OA LW 0801  
MODEL NAME. PIPED STEM  
FABRIC NAME. PEPPIN MERINO TROPICAL  
COMPOSITION. W100%  
SIZE. 28, 30, 32, 34, 36  
PRICE. ¥28,000 ( ¥ 30,800)  
COUNTRY OF ORIGIN. JAPAN  
COLOR. GRAY-003, CHARCOAL-004



GRAY-003



CHARCOAL-004



			28	30	32	34	36	CM
waist			74	79	84	89	94	
hip			96	100.3	104.6	108.9	113.2	
thigh width			32.5	33.7	34.9	36.1	37.3	
leg opening width			24.8	25.5	26.2	26.9	27.6	
inseam			76	78	80	82	84	

ORDER DEADLINE FEBRUARY 15, 2026  
SHIPS IN AUGUST 2026 WITH EX-WORKS

STYLE NO. BZ OA LW 0803  
MODEL NAME. 3B AUTHENTIC BLAZER  
FABRIC NAME. PEPPIN MERINO SAXONY  
COMPOSITION. W100%  
SIZE. 32, 34, 36, 38, 40, 42, 44  
PRICE. ¥66,000 ( ¥ 72,600)  
COUNTRY OF ORIGIN. JAPAN  
COLOR. NAVY-075



NAVY-075

	32	34	36	38	40	42	44	CM
shoulder width	42.1	43.5	44.9	46.3	47.7	49.1	50.5	
chest	100.8	104.8	108.8	112.8	116.8	120.8	124.8	
waist	90.5	94.5	98.5	102.5	106.5	110.5	114.5	
length	65	68	71	74	77	80	83	
sleeve	58	59.5	61	62.5	64	65.5	67	

ORDER DEADLINE FEBRUARY 15, 2026  
SHIPS IN AUGUST 2026 WITH EX-WORKS

STYLE NO. BZ OA LW 0804  
MODEL NAME. 4B AUTHENTIC BLAZER  
FABRIC NAME. PEPPIN MERINO SAXONY  
COMPOSITION. W100%  
SIZE. 32, 34, 36, 38, 40, 42, 44  
PRICE. ¥69,000 ( ¥ 75,900)  
COUNTRY OF ORIGIN. JAPAN  
COLOR. NAVY-075



NAVY-075

	32	34	36	38	40	42	44	CM
shoulder width	42.5	43.9	45.3	46.7	48.1	49.5	50.9	
chest	99.3	103.3	107.3	111.3	115.3	119.3	123.3	
waist	88	92	96	100	104	108	112	
length	67	70	73	76	79	82	85	
sleeve	58	59.5	61	62.5	64	65.5	67	



ORDER DEADLINE FEBRUARY 15, 2026  
SHIPS IN AUGUST 2026 WITH EX-WORKS

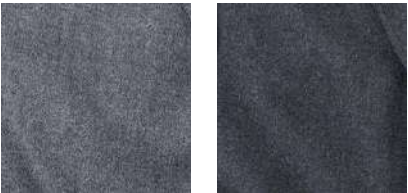
STYLE NO. JK OA LW 0803  
MODEL NAME. 3B AUTHENTIC  
FABRIC NAME. PEPPIN MERINO SAXONY  
COMPOSITION. W100%  
SIZE. 32, 34, 36, 38, 40, 42, 44  
PRICE. ¥68,000 ( ¥ 74,800)  
COUNTRY OF ORIGIN. JAPAN  
COLOR. GRAY-003, CHARCOAL-004



GRAY-003



CHARCOAL-004



	32	34	36	38	40	42	44	CM
shoulder width	42.1	43.5	44.9	46.3	47.7	49.1	50.5	
chest	100.8	104.8	108.8	112.8	116.8	120.8	124.8	
waist	90.5	94.5	98.5	102.5	106.5	110.5	114.5	
length	65	68	71	74	77	80	83	
sleeve	58	59.5	61	62.5	64	65.5	67	

ORDER DEADLINE FEBRUARY 15, 2026  
SHIPS IN AUGUST 2026 WITH EX-WORKS

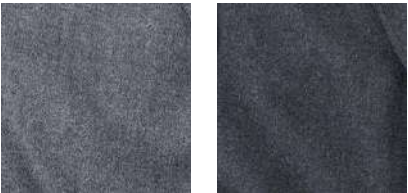
STYLE NO. PP OA LM 0803  
MODEL NAME. PIPED STEM  
FABRIC NAME. PEPPIN MERINO SAXONY  
COMPOSITION. WOOL 100%  
SIZE. 28, 30, 32, 34, 36  
PRICE. ¥30,000 ( ¥ 33,000)  
COUNTRY OF ORIGIN. JAPAN  
COLOR. GRAY-003, CHARCOAL-004



GRAY-003



CHARCOAL-004



			28	30	32	34	36	CM
waist			74	79	84	89	94	
hip			96	100.3	104.6	108.9	113.2	
thigh width			32.5	33.7	34.9	36.1	37.3	
leg opening width			24.8	25.5	26.2	26.9	27.6	
inseam			76	78	80	82	84	

ORDER DEADLINE FEBRUARY 15, 2026  
SHIPS IN AUGUST 2026 WITH EX-WORKS

STYLE NO. PP OA LW 0805  
MODEL NAME. PIPED STEM  
FABRIC NAME. WEST POINT  
COMPOSITION. C100%  
SIZE. 28, 30, 32, 34, 36  
PRICE. ¥24,000 ( ¥ 26,400)  
COUNTRY OF ORIGIN. JAPAN  
COLOR. OFF WHITE-002, BEIGE-033  
KHAKI-054, NAVY-075



OFF WHITE-002



BEIGE-033



KHAKI-054



NAVY-075

			28	30	32	34	36	CM
waist			74	79	84	89	94	
hip			96	100.3	104.6	108.9	113.2	
thigh width			32.5	33.7	34.9	36.1	37.3	
leg opening width			24.8	25.5	26.2	26.9	27.6	
inseam			76	78	80	82	84	



HERITAGE  
STOCK  
PROGRAM.

ORDER DEADLINE FEBRUARY 15, 2026  
SHIPS IN AUGUST 2026 WITH EX-WORKS

STYLE NO. TR OA LW 0806  
MODEL NAME. REGIMENTAL&ROYAL CREST  
FABRIC NAME. SILK REP  
COMPOSITION. S100%  
SIZE. F  
PRICE. ¥14,500 ( ¥ 15,950)  
COUNTRY OF ORIGIN. JAPAN  
COLOR. REGIMENTAL-260, ROYAL CREST-275



REGIMENTAL-260



ROYAL CREST-275



	F							CM
width	8.5							
length	144							



Web site



FW26 Looks



Instagram

The QR code contains a hyperlink.  
Please scan it with your smartphone on printed materials, or simply click on it when viewing digitally.

このQRコードにはリンクが埋め込まれています。  
印刷物ではスマホなどで読み取り、デジタルデータ上ではクリックしてご覧いただけます。

